

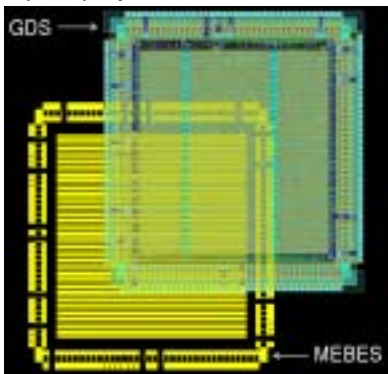
# GlobeViewer

## A Fast Mask Layout Viewer

In very-deep-sub micron era, mask and layout data become huge. The traditional viewing tools are difficult handling, as it is too time-consuming. GlobeViewer is easy viewing huge size data of a Giga-byte or more. It has the capability to view data quickly and efficiency.

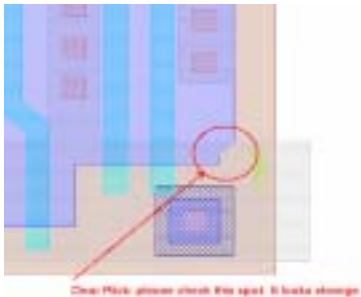
### Powerful Viewing Performance

- Quick open and fast viewing  
(1G Mebes open time 80sec)
- GDS direct open to viewing  
(323M open time much less 20sec)
- Huge data capacity  
(Data Handling >200GB)
- Multiple files opened
- Transformation, i.e. rotate, mirror...
- Overlap display with different format



### Data Formats Support

- Support multiple standard formats:  
GDS, MEBES-pattern/job, DXF, MIC...
- Area selected save to GDS w/ hierarchy
- Annotation/bookmark in view, save as html/png

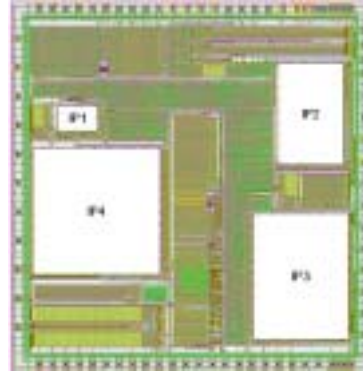


- Compressed support: gzip, gzzip, mezip

### Highly Security

- Remote access control scheme :  
working directory, data file, IP block
- User account control scheme: server and client
- Easily define protected IP by cell name, block

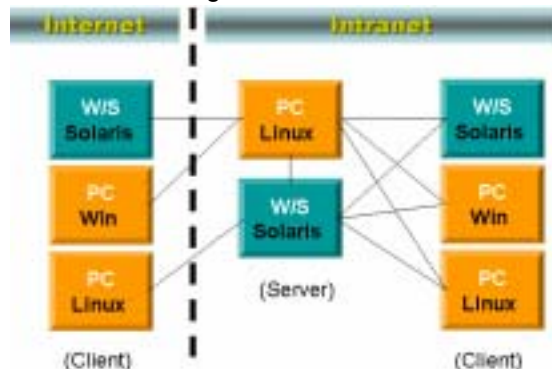
clicking or area selected



- Auto check-out IDLE license
- Access history logging

### Operations Environment

- Support Linux, Unix and Wins platform
- Remote viewing via Internet/Intranet



### Information & Query Features

- Cell Browser for parent/child cells relative
- Distances & Ruler among different formats
- Customized functions:  
*compute area, shape checking....*
- DRC result viewing

### Analysis & Checking Features

- Pattern Density Assess
- Manufacturing Rule Checking (Q1,'05 release)

**GlobeViewer** provide more useful functions and a well viewing environment beyond the general viewer, not just standalone using, and remote viewing no boundary for team work. AnaGlobe continue focus on the useful features development.

AnaGlobe Technology, Inc.

安仲科技股份有限公司

2F, No.10, Industry E. 4th Road, Science-Based Industrial Park  
Hsinchu 300 Taiwan

Phone: +886-3-6668001

FAX: +886-3-6661976

Email: sales@anaglobe.com

http://www.anaglobe.com